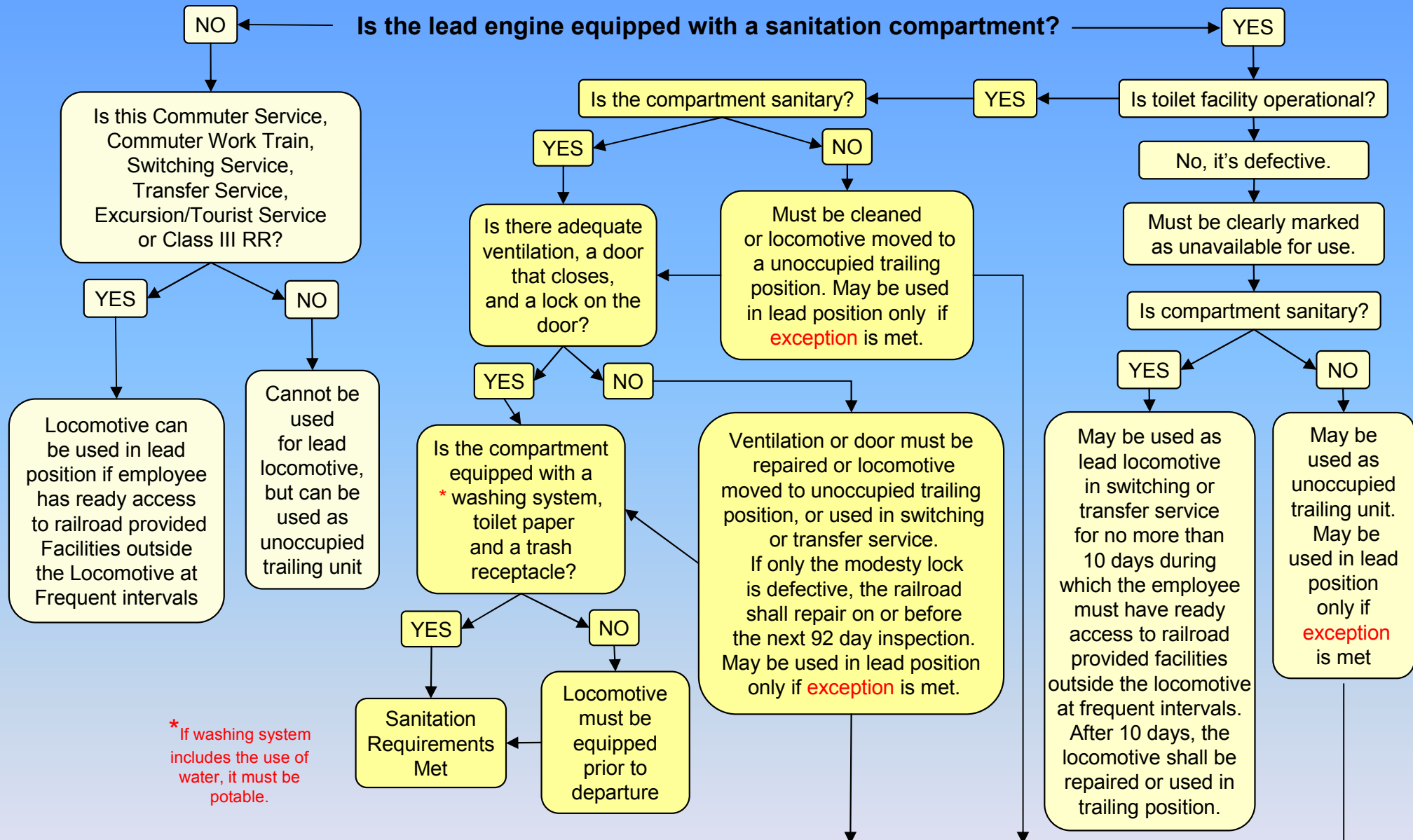


Locomotive Daily Inspection Cab Sanitation Guide



* If washing system includes the use of water, it must be potable.

EXCEPTION

If the locomotive is determined to be unsanitary or defective or both, it shall not be used in the lead position unless all of the following conditions have been met.

1. There is no way to switch, replace, clean or repair the locomotives at it's current location.
2. While non-compliant, the locomotive did not pass by a location where it could have been cleaned, repaired, or switched.
3. The railroad arranges for access to a suitable facility outside the locomotive.
4. The door to the facility is closed and adequate ventilation is provided to the cab.
5. Repairs or replacement with a compliant unit must be made at the next available location or no later than the next daily inspection, whichever comes first.

- **Commuter service** means the type of railroad service described under the heading ``Commuter Operations" in 49 CFR part 209, Appendix A.
- **Commuter work train** is a non-revenue service train used in the administration and upkeep service of the commuter railroad.
- **Modesty lock** means a latch that can be operated in the normal manner only from within the sanitary compartment, that is designed to prevent entry of another person when the sanitary compartment is in use. A modesty lock may be designed to allow deliberate forced entry in the event of an emergency.
- **Other short-haul passenger service** means the type of railroad service described under the heading ``Other short-haul passenger service" in 49 CFR part 209, Appendix A.
- **Potable water** means water that meets the requirements of 40 CFR part 141, the Environmental Protection Agency's Primary Drinking Water Regulations, or water that has been approved for drinking and washing purposes by the pertinent state or local authority having jurisdiction. For purposes of this section, commercially available, bottled drinking water is deemed potable water.
- **Sanitary** means lacking any condition in which any significant amount of filth, trash, or human waste is present in such a manner that a reasonable person would believe that the condition might constitute a health hazard; or of strong, persistent, chemical or human waste odors sufficient to deter use of the facility, or give rise to a reasonable concern with respect to exposure to hazardous fumes. Such conditions include, but are not limited to, a toilet bowl filled with human waste, soiled toilet paper, or other products used in the toilet compartment, that are present due to a defective toilet facility that will not flush or otherwise remove the waste; visible human waste residue on the floor or toilet seat that is present due to a toilet facility that overflowed; an accumulation of soiled paper towels or soiled toilet paper on the floor, toilet facility or sink; an accumulation of visible dirt or human waste on the floor, toilet facility, or sink; and strong, persistent chemical or human waste odors in the compartment.
- **Sanitation compartment** means an enclosed compartment on a railroad locomotive that contains a toilet facility for employee use.
- **Switching service** means the classification of railroad freight and passenger cars according to commodity or destination; assembling cars for train movements; changing the position of cars for purposes of loading, unloading, or weighing; placing locomotives and cars for repair or storage; or moving rail equipment in connection with work service that does not constitute a train movement.
- **Toilet facility** means a system that automatically or on command of the user removes human waste to a place where it is treated, eliminated, or retained such that no solid or non-treated liquid waste is thereafter permitted to be released into the bowl, urinal, or room and that prevents harmful discharges of gases or persistent offensive odors.
- **Transfer service** means a freight train that travels between a point of origin and a point of final destination not exceeding 20 miles and that is not performing switching service.
- **Unsanitary** means having any condition in which any significant amount of filth, trash, or human waste is present in such a manner that a reasonable person would believe that the condition might constitute a health hazard; or strong, persistent, chemical or human waste odors sufficient to deter use of the facility or to give rise to a reasonable concern with respect to exposure to hazardous fumes. Such conditions include, but are not limited to, a toilet bowl filled with human waste, soiled toilet paper, or other products used in the toilet compartment, that are present due to a defective toilet facility that will not flush or otherwise remove the waste; visible human waste residue on the floor or toilet seat that is present due to a toilet facility that overflowed; an accumulation of soiled paper towels or soiled toilet paper on the floor, toilet facility, or sink; an accumulation of visible dirt or human waste on the floor, toilet facility, or sink; and strong persistent chemical or human waste odors in the compartment.
- **Washing system** means a system for use by railroad employees to maintain personal cleanliness that includes a secured sink or basin, water, antibacterial soap, and paper towels; or antibacterial waterless soap and paper towels; or antibacterial moist towelettes and paper towels; or any other combination of suitable antibacterial cleansing agents.

The information contained in this document is meant to be used as a reference only and is not all inclusive of the Locomotive Cab Sanitation Standards. Individuals are advised to read the rule in its entirety.

For additional information please visit :

<https://www.ecfr.gov/current/title-49/subtitle-B/chapter-II/part-229/subpart-C/section-229.137>